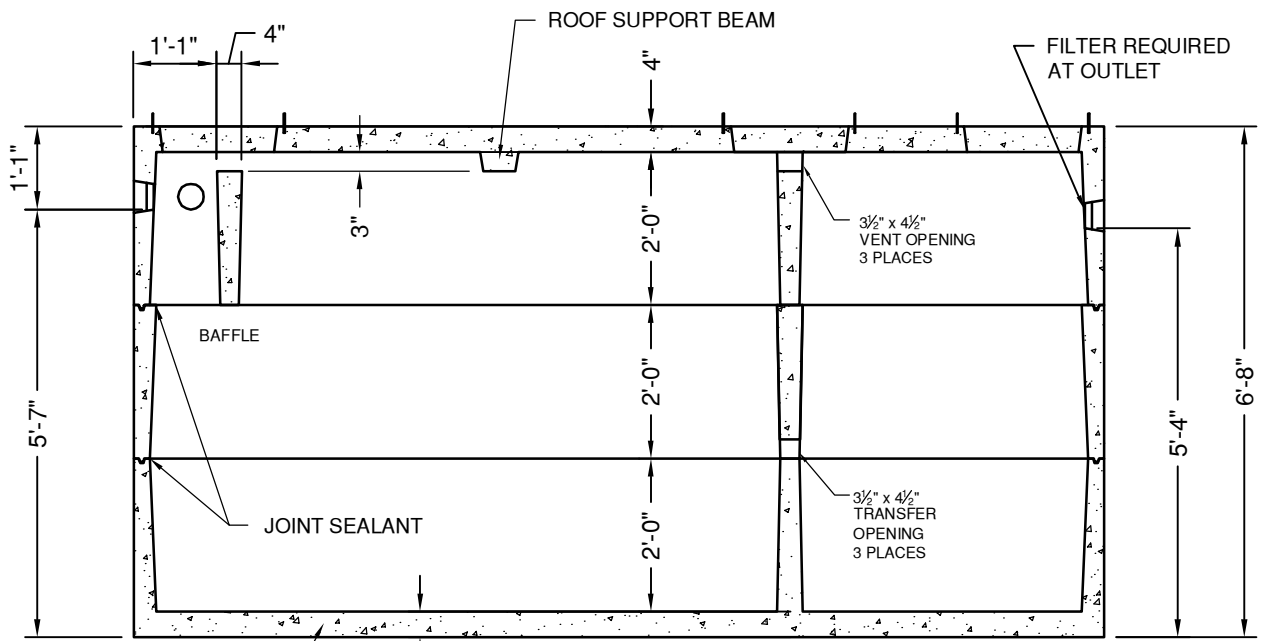


PLAN VIEW

18 1/2" DIA CONCRETE PLUG & 20" HDPE RISER STARTER RING - 3 PLACES



SECTION VIEW

#4 BAR @ 12" OC/EW

TOP SECTION: 8,560#

RISER SECTION: 3,720#

BOTTOM SECTION: 7,970#

TOTAL WEIGHT: 20,250#

**SEPTIC TANK
2500 GALLON - 2 COMP
INDIANA**

DATE: 4-11-17

DWG #ST-IN-2500-2



"NPCA" CERTIFIED PLANT

16700 SIMA GRAY RD, HENRYVILLE, IN 47126
Phone: (812) 246-6258 Fax: (812) 294-4862

SPECIFICATIONS

CONCRETE: 4500 PSI @ 28 DAYS

REINFORCEMENT: ASTM A-615, GR 60

LOAD DESIGN: NON-TRAFFIC 18" MAX COVER