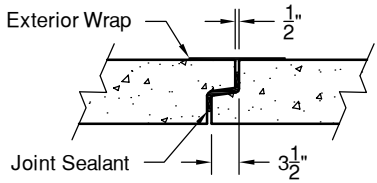


COMPONENTS	
QTY	DESCRIPTION
	Std 6' Section
1	6' Spigot/End Section
1	6' Bell/End Section
2	Sloped & Flared Headwall
	12" x 50' Roll Mastic Wrap
	1 1/2" x 10' Roll Mastic

PLAN VIEW



"NPCA" CERTIFIED PLANT
 16700 SIMA GRAY RD, HENRYVILLE, IN 47126
 Phone: (812) 246-6258 Fax: (812) 294-4862

SPECIFICATIONS

CONCRETE: 5000 PSI @ 28 DAYS
REINFORCEMENT: ASTM A-615, GR 60
DESIGN LOAD: AASHTO HL-93
DESIGN SPECIFICATION: ASTM 1577

**BOX CULVERT LAYOUT
S & F HEADWALLS**

DATE: 4-11-17 DWG #RBC-1-HW