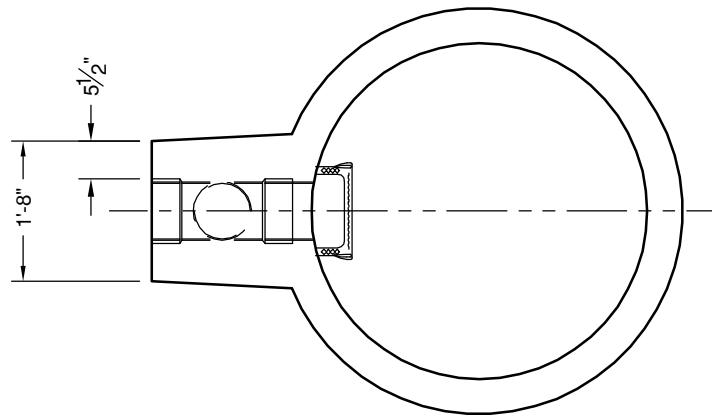


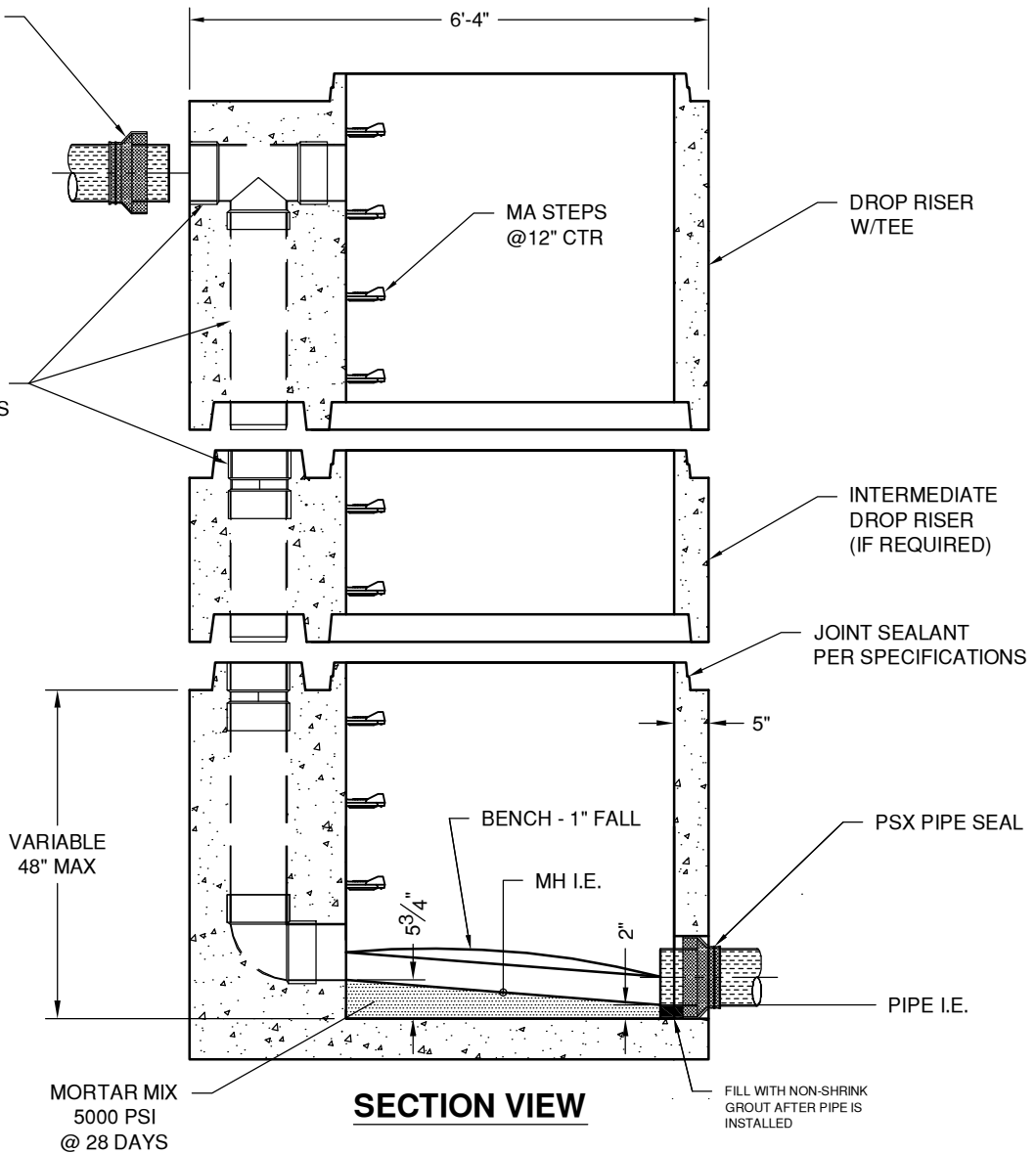
**ACCOMODATES
6" OR 8" DIA
PIPE**



**SEE DWG #SAN-MH-48
FOR ADDITIONAL
COMPONENTS
AND DETAILS**

PSX PIPE SEAL
REQUIRED IF
PIPE SLOPE
EXCEEDS 1.5%

8" DIA SDR 35
PIPE & FITTINGS
CAST IN



SECTION VIEW



"NPCA" CERTIFIED PLANT
16700 SIMA GRAY RD, HENRYVILLE, IN 47126
Phone: (812) 246-6258 Fax: (812) 294-4862

SPECIFICATIONS

CONCRETE: 4500 PSI @ 28 DAYS
REINFORCEMENT: ASTM A-615, GR 60
DESIGN LOAD: AASHTO HS-20
DESIGN SPECIFICATION: ASTM C-478

WEIGHT: 48" BASE 8,160# RISER 1,215#/VF

**SANITARY
8" DROP MANHOLE
48" DIAMETER**

DATE: 3-30-18 DWG #SAN-MH-48D