

PLAN VIEW

SIZE WxD	WALLS	WEIGHT/LF	LENGTH	WEIGHT/SEC
12' x 2'	12"	4,800#	4'	19,200#
12' x 3'	12"	5,100#	6'	30,600#
12' x 4'	12"	5,400#	6'	32,400#
12' x 5'	12"	5,700#	6'	34,200#
12' x 6'	12"	6,000#	6'	36,000#
12' x 7'	12"	6,300#	6'	37,800#
12' x 8'	12"	6,600#	6'	39,600#
12' x 9'	12"	6,900#	6'	41,400#
12' x 10'	12"	7,200#	6'	43,200#
12' x 11'	12"	7,500#	6'	45,000#
12' x 12'	12"	7,800#	6'	46,800#

BOX CULVERT OPTIONS

LARGER SPANS

ALTERNATE SECTION LENGTHS

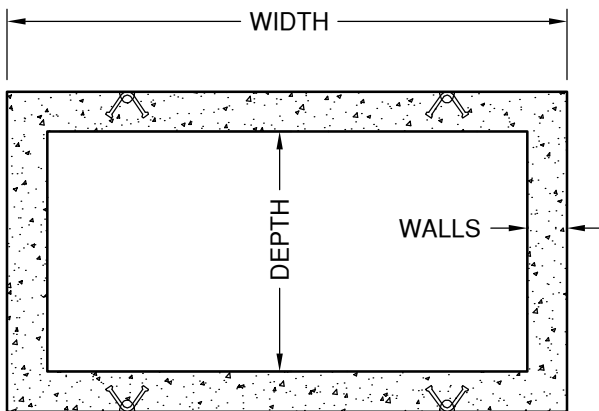
3-SIDED BOX CULVERT

WINGWALLS / HEADWALLS

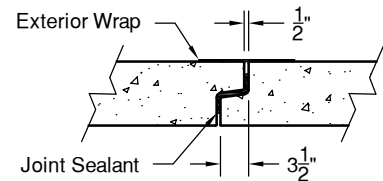
SKewed / BEND / CURVED LAYOUTS

PIPE OR DRAINAGE HOLES

EXTERIOR COATINGS



SECTION VIEW



Joint Detail



"NPCA" CERTIFIED PLANT
 16700 SIMA GRAY RD, HENRYVILLE, IN 47126
 Phone: (812) 246-6258 Fax: (812) 294-4862

SPECIFICATIONS

CONCRETE: 5000 PSI @ 28 DAYS

REINFORCEMENT: ASTM A-615, GR 60

DESIGN LOAD: AASHTO HL-93

DESIGN SPECIFICATION: ASTM 1577

WEIGHT: See Chart

BOX CULVERT
12' x 2' => 12' x 12'

DATE: 1-2-17

DWG #RBC-12X