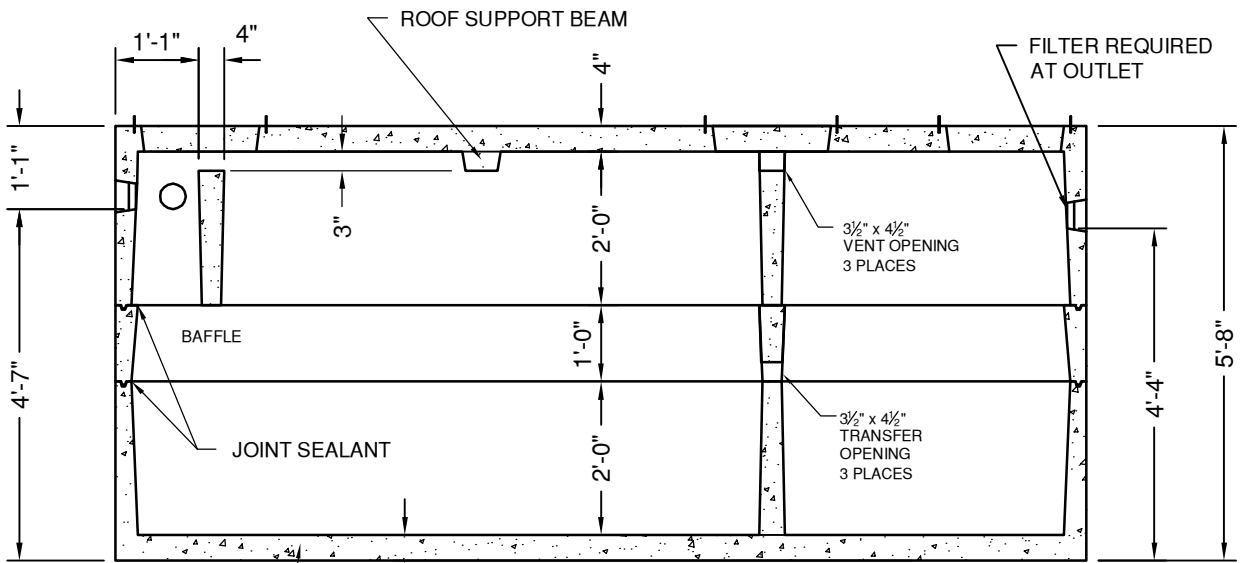


**PLAN VIEW**

18 1/2" DIA CONCRETE PLUG & 20" HDPE RISER STARTER RING - 3 PLACES



**SECTION VIEW**

#4 BAR @ 12" OC/EW

TOP SECTION: 8,560#
RISER SECTION: 2,010#
BOTTOM SECTION: 7,970#
TOTAL WEIGHT: 18,540#

**SEPTIC TANK  
2000 GALLON - 2 COMP  
INDIANA**

DATE: 4-6-17

DWG #ST-IN-2000-2



"NPCA" CERTIFIED PLANT

16700 SIMA GRAY RD, HENRYVILLE, IN 47126  
Phone: (812) 246-6258 Fax: (812) 294-4862

**SPECIFICATIONS**

CONCRETE: 4500 PSI @ 28 DAYS  
REINFORCEMENT: ASTM A-615, GR 60  
LOAD DESIGN: NON-TRAFFIC 18" MAX COVER