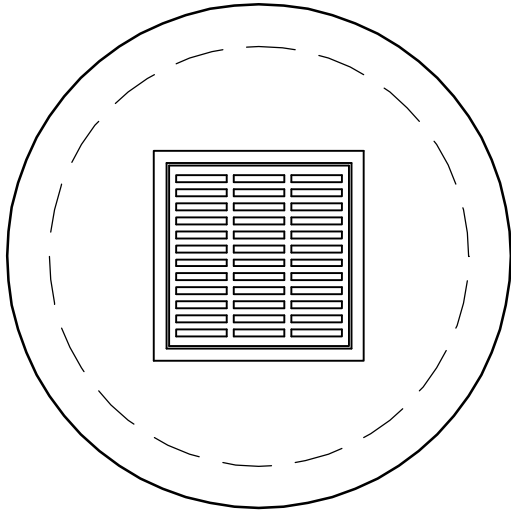
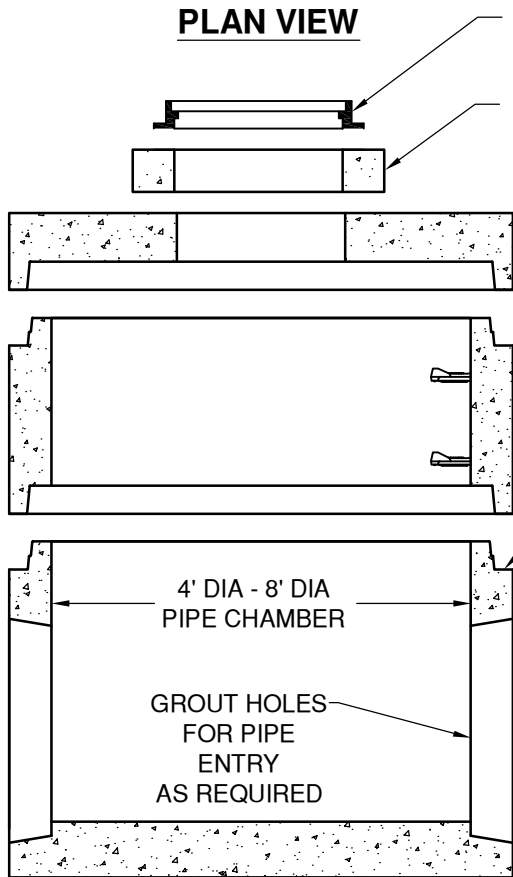


**TOP SLAB AVAILABLE  
FOR ALTERNATE  
CASTING SIZES**



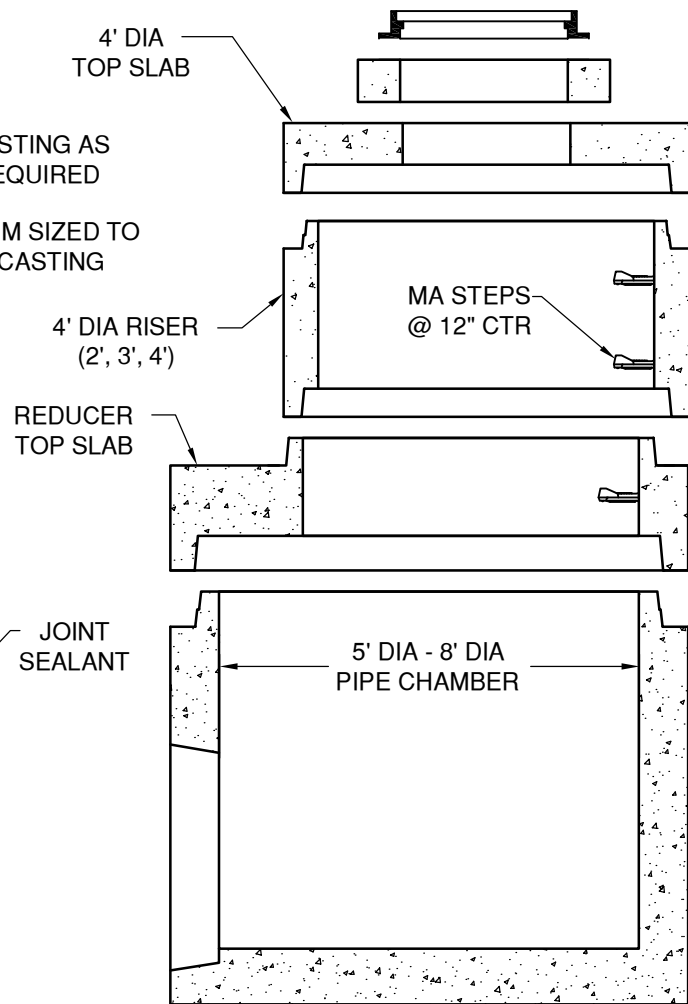
**PLAN VIEW**



**STANDARD SECTION VIEW**

**STANDARD ROUND SIZES**

PIPE CHAMBER SIZE (ID)	MAX SECTION HEIGHT	WALL	MAX PIPE SIZE	MAX WEIGHT
48" DIA	48"	5"	24" RCP 30" HDPE	4,983# (866#/VF)
60" DIA	60"	6"	36"	9,212# (1,300#/VF)
72" DIA	72"	7"	48"	15,240# (1,800#/VF)
96" DIA	96"	9"	60"	36,000# (3,093#/VF)



**REDUCER SECTION VIEW**



"NPCA" CERTIFIED PLANT  
16700 SIMA GRAY RD, HENRYVILLE, IN 47126  
Phone: (812) 246-6258 Fax: (812) 294-4862

**SPECIFICATIONS**

CONCRETE: 4500 PSI @ 28 DAYS  
REINFORCEMENT: ASTM A-615, GR 60  
DESIGN LOAD: AASHTO HS-20

WEIGHT: See Chart

**CATCH BASIN  
4' DIA - 8' DIA**

DATE: 12-16-16

DWG #CB-STD-02