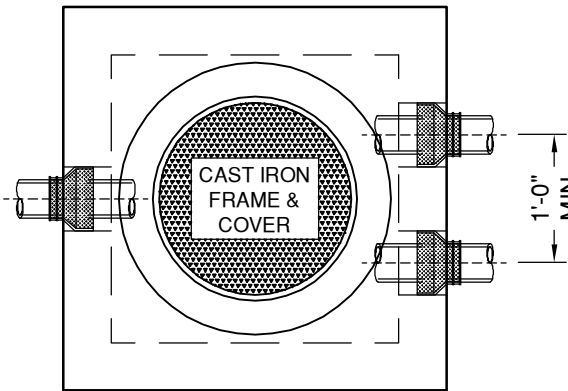


STANDARD BOX SIZES

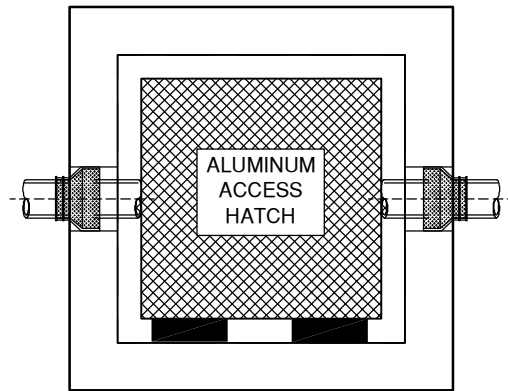
SIZE (ID)	MAX BASE HEIGHT (ID)	MAX PED HATCH SIZE	MAX H-20 HATCH SIZE	WEIGHT @ MAX HGT
2' x 2'	48"	N/A	N/A	3,675#
24" x 30"	48"	N/A	N/A	4,090#
2' x 3'	48"	N/A	N/A	4,500#
24" x 46"	48"	N/A	N/A	5,190#
28" x 44"	48"	24" x 36"	24" x 30"	5,370#
30" x 30"	48"	24" x 24"	N/A	4,520#
30" x 46"	48"	24" x 36"	24" x 30"	5,670#
3' x 3'	48"	30" x 30"	24" x 24"	5,400#
4' x 4'	54"	42" x 42"	36" x 36"	7,950#

ALTERNATE ROUND OR CUSTOM SIZES ALSO AVAILABLE

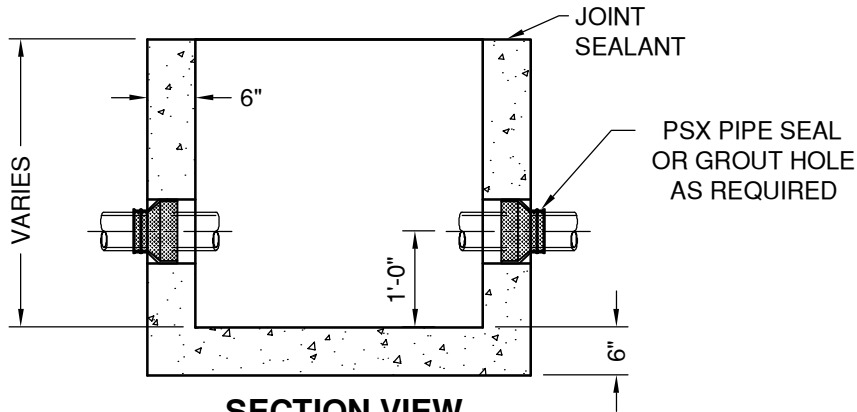
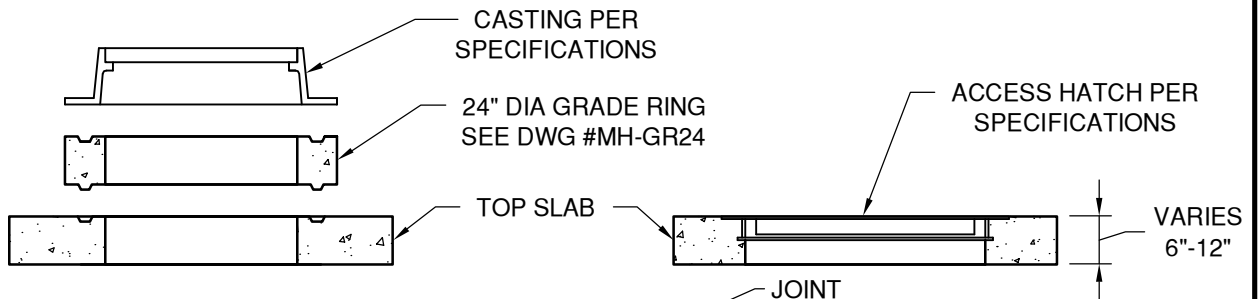
ALL H-20 RATED HATCHES REQUIRE 12" THICK TOP SLAB



PLAN VIEW



PLAN VIEW



SECTION VIEW



"NPCA" CERTIFIED PLANT
16700 SIMA GRAY RD, HENRYVILLE, IN 47126
Phone: (812) 246-6258 Fax: (812) 294-4862

SPECIFICATIONS

CONCRETE: 4500 PSI @ 28 DAYS
REINFORCEMENT: ASTM A-615, GR 60
DESIGN LOAD: AASHTO HS-20 (HATCH PER SPECS)

WEIGHT: See Chart

UTILITY/VALVE PIT
2' x 2' => 4' x 4'

DATE: 1-24-17

DWG #VV-STD-01