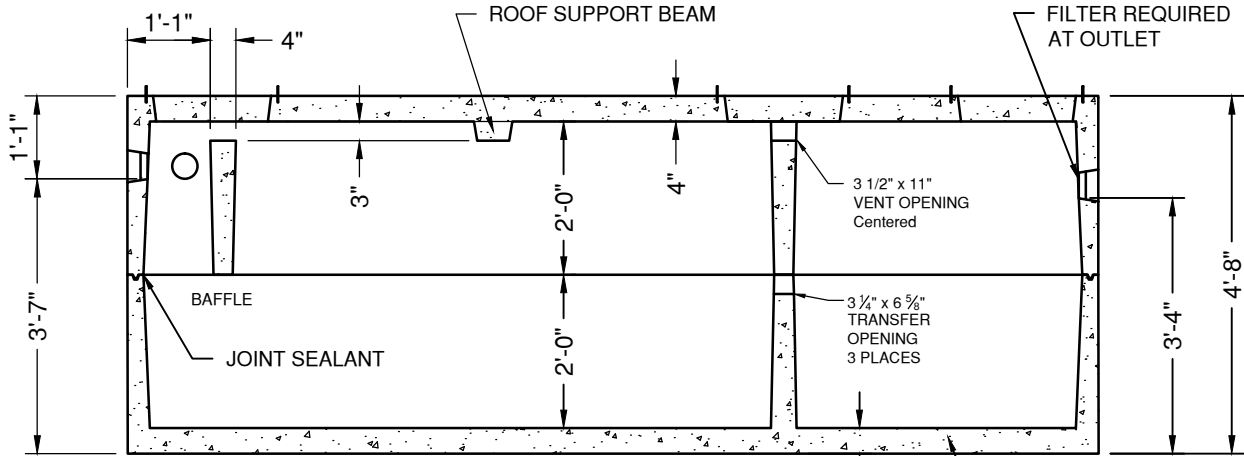


PLAN VIEW

18½" DIA CONCRETE PLUG
& 20" HDPE RISER
STARTER RING - 3 PLACES



SECTION VIEW

TOP SECTION: 8,560#
BOTTOM SECTION: 7,970#
TOTAL WEIGHT: 16,530#
SEPTIC TANK
1500 GALLON - 2 COMP
INDIANA
DATE: 3-28-17
DWG #ST-IN-1500-2



"NPCA" CERTIFIED PLANT
16700 SIMA GRAY RD, HENRYVILLE, IN 47126
Phone: (812) 246-6258 Fax: (812) 294-4862

SPECIFICATIONS

CONCRETE: 4500 PSI @ 28 DAYS
REINFORCEMENT: ASTM A-615, GR 60
LOAD DESIGN: NON-TRAFFIC 18" MAX COVER