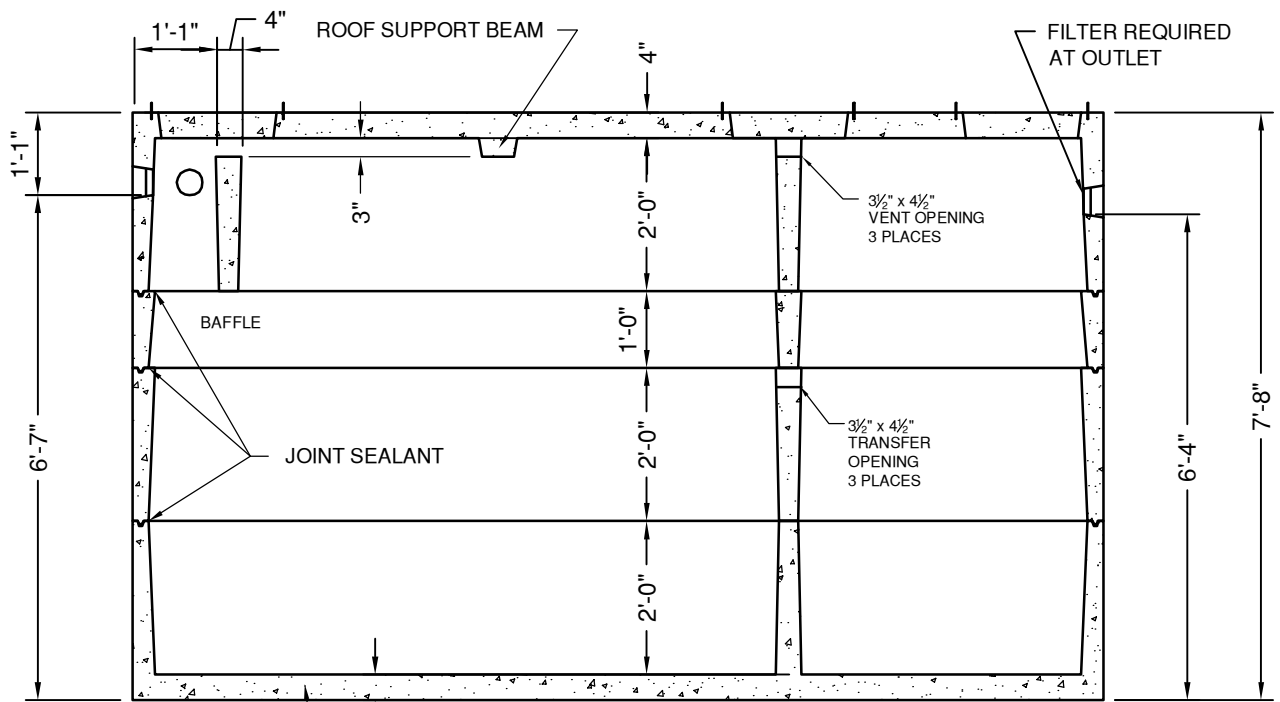


PLAN VIEW

18 1/2" DIA CONCRETE PLUG
& 20" HDPE RISER
STARTER RING - 3 PLACES



SECTION VIEW

#4 BAR @ 12" OC/EW

TOP SECTION: 8,560#

1' RISER SECTION: 2,010#

2' RISER SECTION: 3,720#

BOTTOM SECTION: 7,970#

TOTAL WEIGHT: 22,260#

SEPTIC TANK
3000 GALLON - 2 COMP
INDIANA

DATE: 4-11-17

DWG #ST-IN-3000-2



"NPCA" CERTIFIED PLANT

16700 SIMA GRAY RD, HENRYVILLE, IN 47126
Phone: (812) 246-6258 Fax: (812) 294-4862

SPECIFICATIONS

CONCRETE: 4500 PSI @ 28 DAYS

REINFORCEMENT: ASTM A-615, GR 60

LOAD DESIGN: NON-TRAFFIC 18" MAX COVER