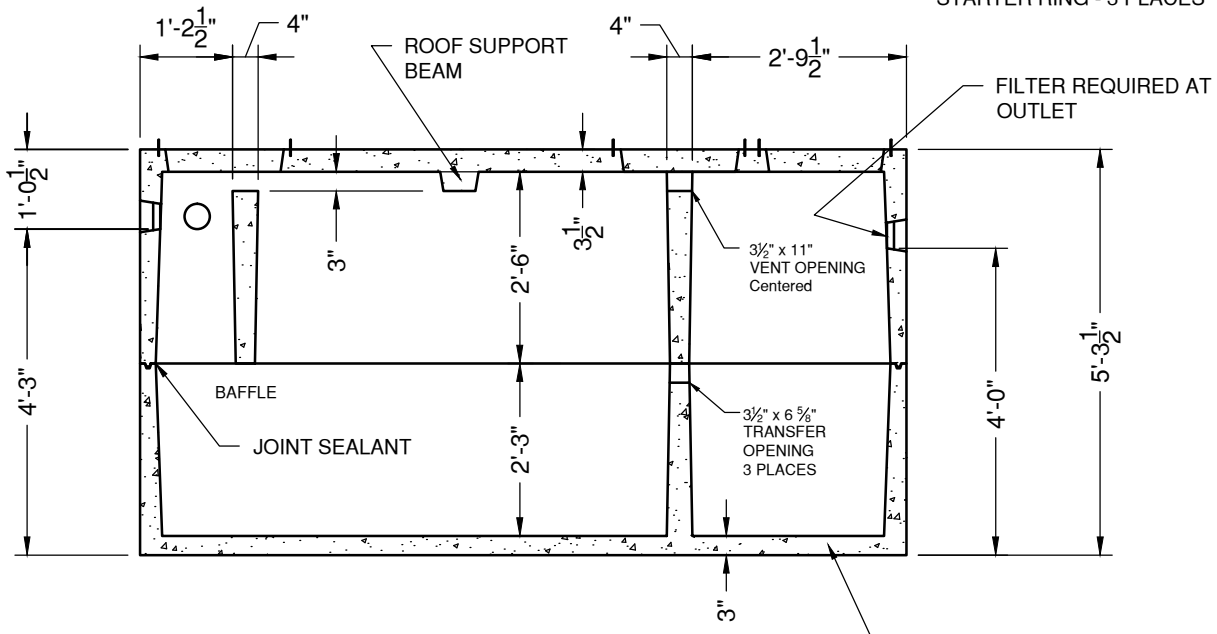


**PLAN VIEW**

18 1/2" DIA CONCRETE PLUG & 20" DIA HDPE RISER STARTER RING - 3 PLACES



**SECTION VIEW**

#3 Ø BAR @ 18" OC/EW



"NPCA" CERTIFIED PLANT  
 16700 SIMA GRAY RD, HENRYVILLE, IN 47126  
 Phone: (812) 246-6258 Fax: (812) 294-4862

**SPECIFICATIONS**

CONCRETE: 4500 PSI @ 28 DAYS  
 REINFORCEMENT: ASTM A-615, GR 60  
 LOAD DESIGN: NON-TRAFFIC 18" MAX COVER

WEIGHT: 11,080#

**SEPTIC TANK  
 1250 GALLON - 2 COMP  
 INDIANA**

DATE: 2-1-17

DWG #ST-IN-1250-2