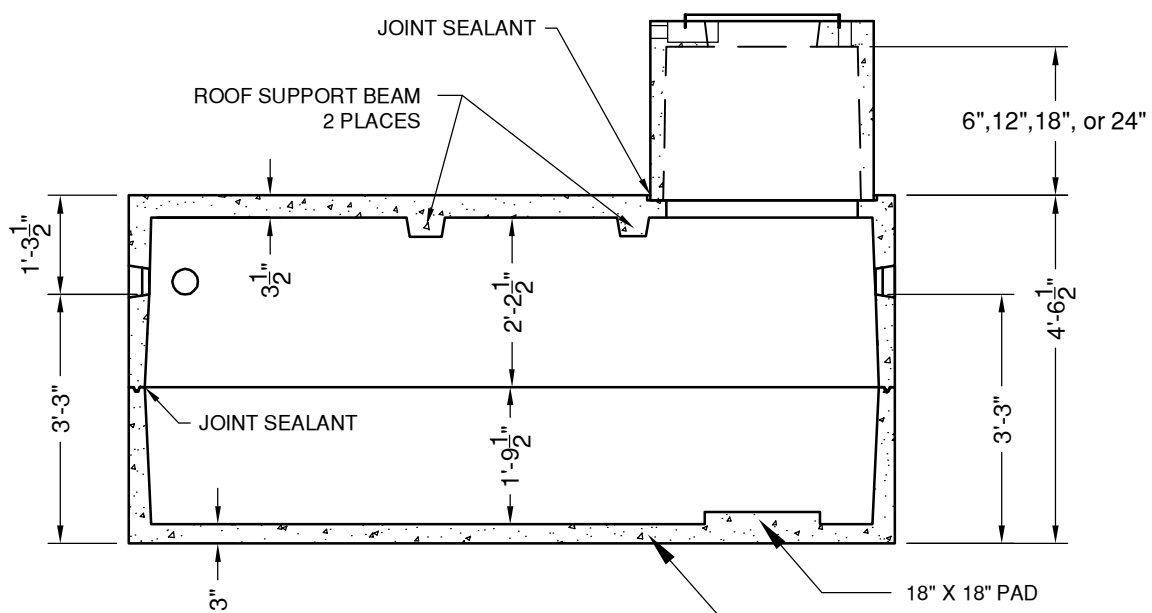


PLAN VIEW

30" x 30" PUMP TANK RISER
SEE DWG #ST-IN-PR



SECTION VIEW

3 Ø BAR @ 18" OC/EW



"NPCA" CERTIFIED PLANT
16700 SIMA GRAY RD, HENRYVILLE, IN 47126
Phone: (812) 246-6258 Fax: (812) 294-4862

SPECIFICATIONS

| |
|--|
| CONCRETE: 4500 PSI @ 28 DAYS |
| REINFORCEMENT: ASTM A-615, GR 60 |
| LOAD DESIGN: NON-TRAFFIC 18" MAX COVER |

WEIGHT: 8,908# + RISER

**PUMP TANK
1000 GALLON
INDIANA**

DATE: 2-1-17

DWG #ST-IN-1000-P